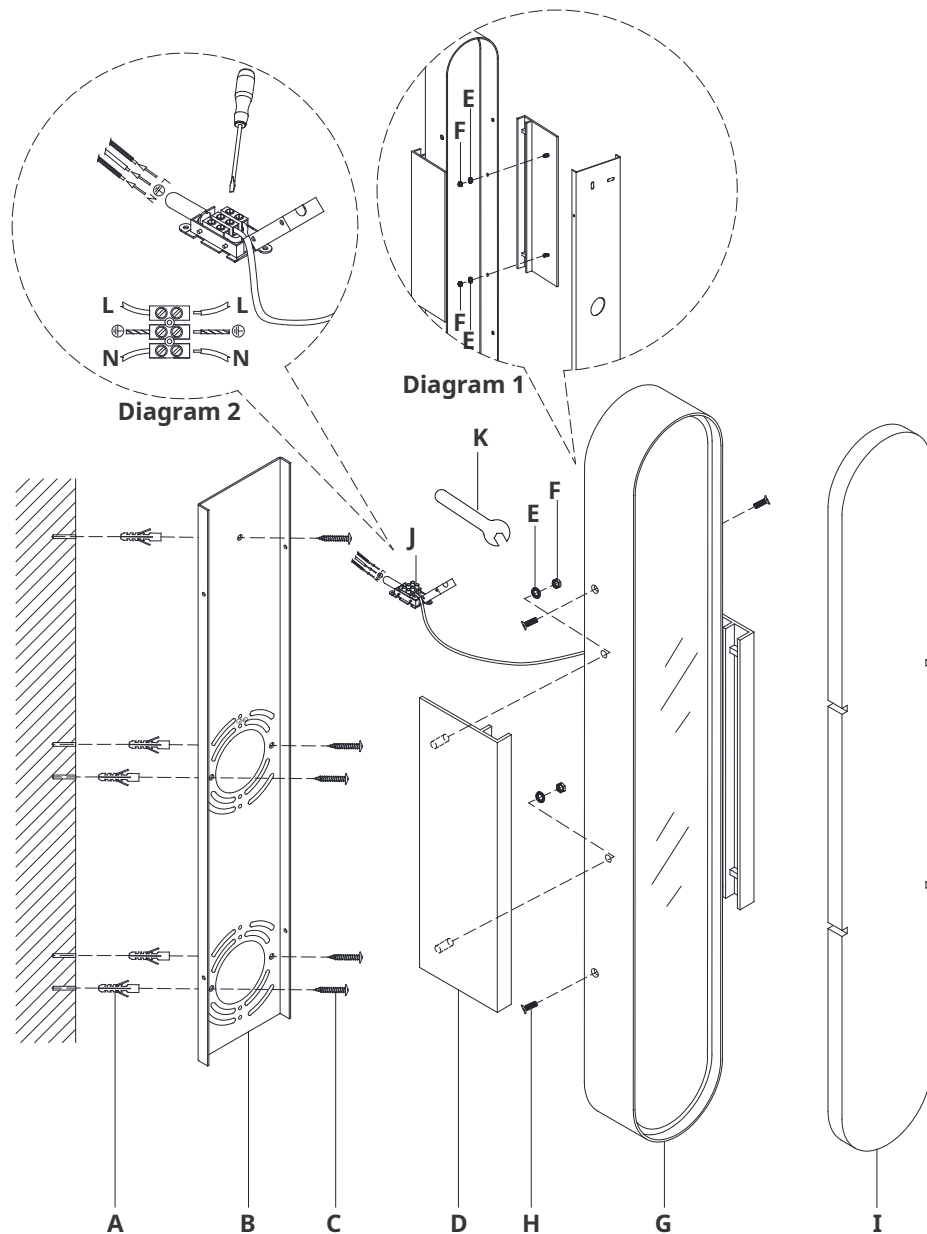


ASSEMBLY INSTRUCTIONS



Melange 28" Elongated Sconce

Item # KW 2016-EU

NOTICE:

This light fixture should be installed in accordance with all applicable, local installation codes, and by a person familiar with the construction and operation of it, as well as the hazards involved. Inspect item and contents carefully. If any damage or defect is found, do not install. Retain all packaging material until installation is complete and approved.

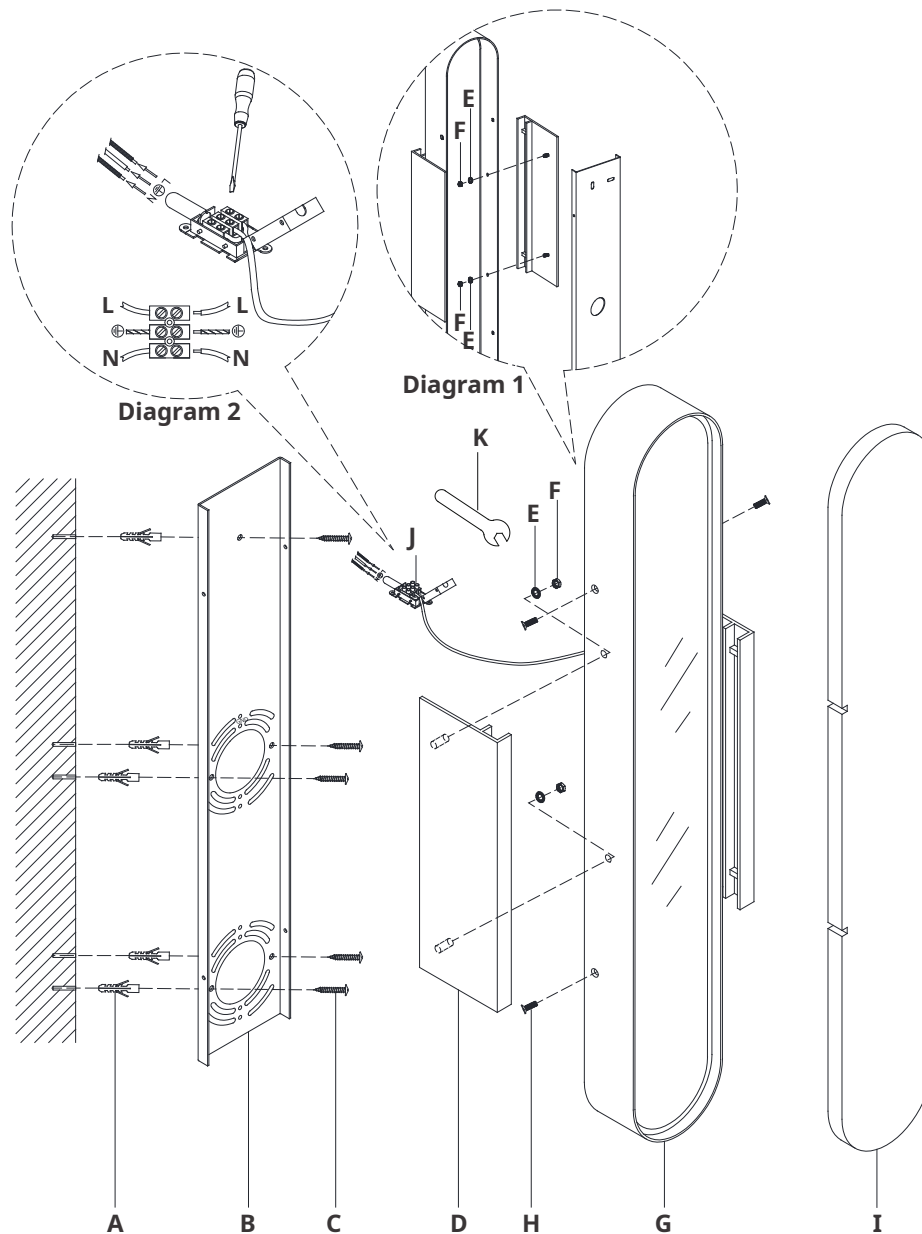
TOOLS REQUIRED (NOT INCLUDED):

Phillips Screwdriver	Slotted Screwdriver	Drill
Pencil	Hammer	

1. Carefully remove all parts from the box. Place on a clean, soft surface.
2. Remove mounting plate (B) from fixture (G) by removing screws (H).
3. Remove brackets (D) from fixture (G) by removing nuts (F) and lock washers (E) using provided wrench (K).
4. Install alabaster panel (I) to brackets (D), then install brackets (D) to fixture (G) and secure with lock washers (E) and nuts (F) using provided wrench (K). (See diagram 1)
5. Using mounting plate (B) as a guide, line up with the wall and mark anchor positions.
6. Using a drill bit slightly smaller than the anchor, drill holes in the marked positions. Install anchors (A) into the holes using hammer.
7. Install mounting plate (B) to wall and secure with wood screws (C) to anchors (A).
8. Open terminal block (J) to prepare for installation of electrical wires. Use diagram 2 to reference electrical installation steps below.
9. Connect fixture ground (green) and supply ground (usually green or yellow) to terminal block (J) and secure with screws.
10. Connect neutral wires (blue) to terminal block (J) and secure with screws.

NOTE: It is imperative that the fixture is grounded.

ASSEMBLY INSTRUCTIONS



Melange 28" Elongated Sconce

Item # KW 2016-EU

NOTICE:

This light fixture should be installed in accordance with all applicable, local installation codes, and by a person familiar with the construction and operation of it, as well as the hazards involved. Inspect item and contents carefully. If any damage or defect is found, do not install. Retain all packaging material until installation is complete and approved.

11. Connect hot wires (brown) to terminal block **(J)** and secure with screws. Close terminal block **(J)**.

CAUTION: Do not reverse the hot and neutral connections.

12. Install fixture **(G)** to mounting plate **(B)** and secure with screws **(H)**.

Care Instructions: Clean only with a soft dry cloth or feather duster. Do not use abrasive or chemical agents.